



# The Role of Community Based Organizations in Research, Evaluation, and Outcomes

Amanda Koyama & Amanda Weightman

# RESEARCH, EVALUATION AND OUTCOMES

“Perspective is about reframing **WHO** gets to define **WHAT** is needed, **WHAT** constitutes success and **WHAT** impact interventions are having. **WHO** benefits from, and controls **WHAT** data is collected, and **HOW** it is used.”

*“Deloitte Insights; Reimagining measurement: Enhancing social impact through better monitoring, evaluation, and learning. 2017.”*

# POWER DYNAMICS

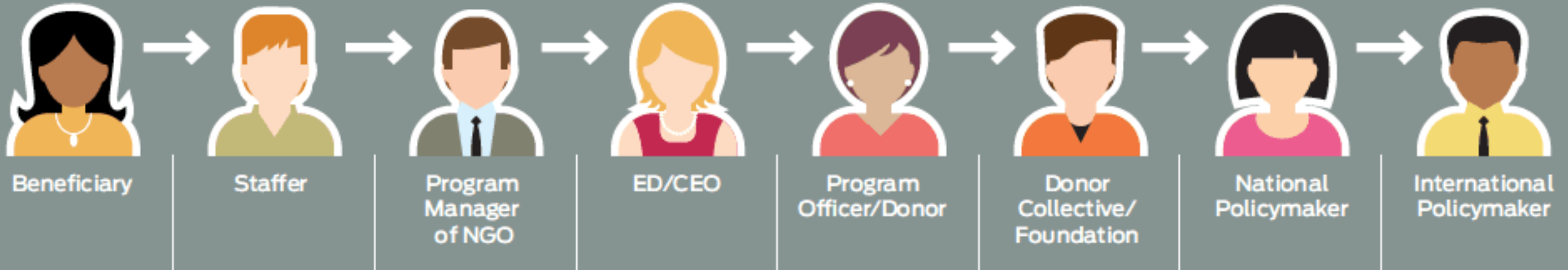


# USING DATA FOR ACTION AND FOR IMPACT

---

## The Data Supply Chain

One way to understand and manage social sector data is to think of it as a supply chain, in which data flows from basic program activities steadily toward greater and greater levels of aggregation.



Source: [https://ssir.org/articles/entry/using\\_data\\_for\\_action\\_and\\_for\\_im](https://ssir.org/articles/entry/using_data_for_action_and_for_im)

# WHAT ROLE DO YOU PLAY?

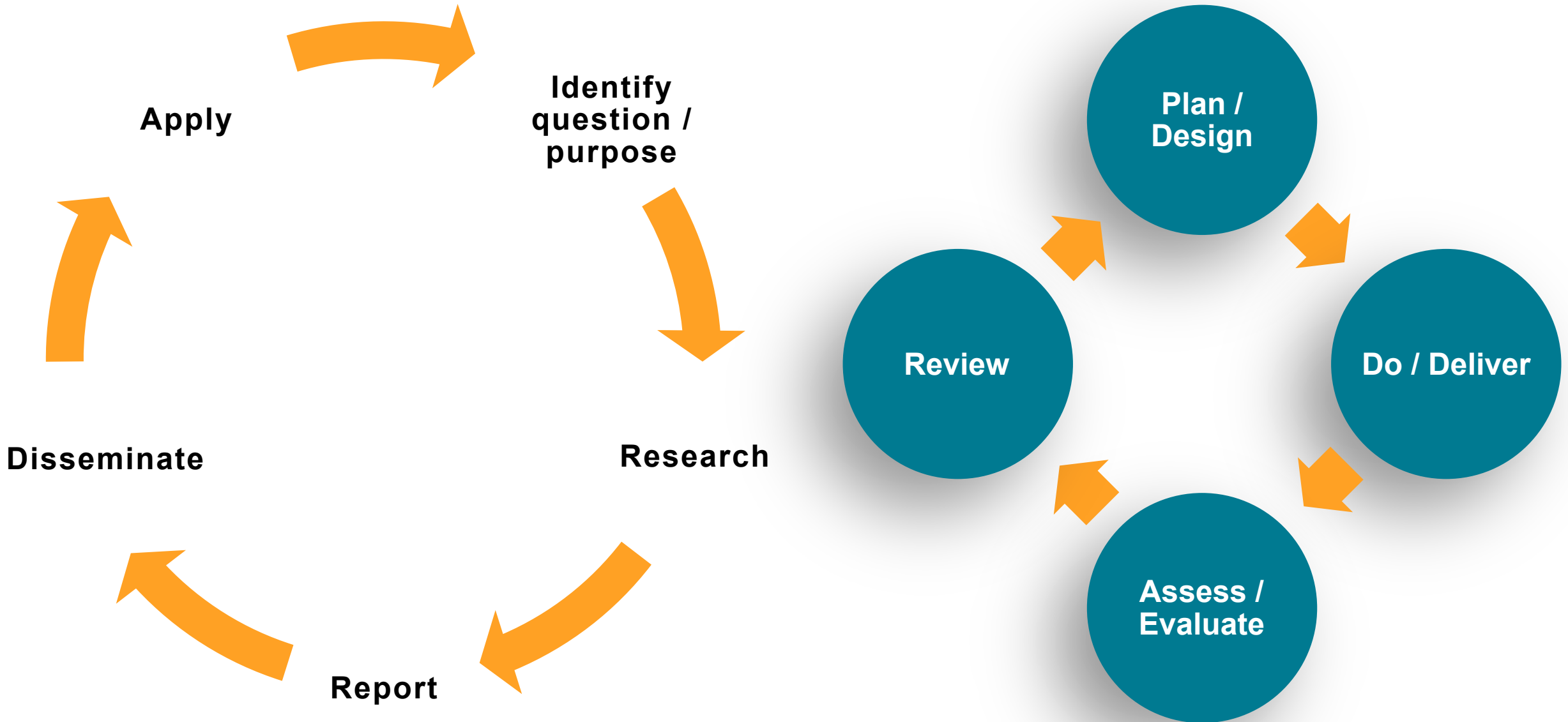
- Where do you sit in the Data/Research Cycle?
- How do you apply the knowledge?

**How is the problem being defined and who is defining it?**

---

# RESEARCH, EVALUATION, DATA

---





OPPORTUNITIE

S

# HOW DATA EMPOWERS PEOPLE AND COMMUNITIES

“ ...they are asking, ‘Where is this data coming from?’ Because by the time you’ve analyzed the data, you’ve already made so many decisions. What to count, who counts, how to count it – and then how to represent it. And all those steps are questions that people should be alerted to and that should be open for debate and discussion”

**Dr. Stefania Forlini**  
**University of Calgary**

Reynolds, Christina. “How data empowers people and communities.”  
<https://explore.ucalgary.ca/how-data-empowers-people-and-communities>, August ,1 2018. Accessed October 16, 2019.





# CULTURAL BROKERAGE PROGRAM



System



Communities



Families



10 Cultural Brokers,  
2 Family Violence  
Brokers, 1 Community  
Broker

# CULTURAL THINKING FRAMEWORK

HOW DO WE UNDERSTAND DIFFERENCES?

WHAT CONSIDERATIONS SHOULD BE TAKEN INTO ACCOUNT?

HOW IS THE PROBLEM BEING DEFINED AND WHO IS DEFINING IT?

WHAT ARE ALL THE WORKING PARTS?

WHAT ARE IMPORTANT QUESTIONS TO ASK?

WHERE ARE THE INDIVIDUAL, COMMUNITY AND SYSTEM STRENGTHS?

# THEORY U



**Observe,  
observe,  
observe**

**Act in an  
instant**

**Retreat and reflect:  
Allow the inner knowing to  
emerge**

# KNOWLEDGE APPLICATION

The background features a glowing blue globe with a network of white lines and dots overlaid on it. A hand is visible in the lower-left corner, reaching towards the globe. The overall theme is digital knowledge and global connectivity.

- How do we move past outputs having a single use?
- Whose responsibility is it?
- How do we co-create effectively?

# THANK YOU

Amanda Koyama – [akoyama@ccisab.ca](mailto:akoyama@ccisab.ca)

Amanda Weightman  
[amandaweightman@habituscollective.ca](mailto:amandaweightman@habituscollective.ca)