

Promoting Engagement & Participation Among Council & Committee Members

P2P 2019 Preconference Panel



Pembina Valley
Local Immigration Partnership



**Regional
Connections**
IMMIGRANT SERVICES

PEMBINA VALLEY LOCAL IMMIGRATION PARTNERSHIP

Building Welcoming and Inclusive Communities for
Newcomers throughout the Pembina Valley.



Pembina Valley
Local Immigration Partnership

Connecting Cultures & Community

Background – Regional Connections

- Local settlement service provider
- Contribution agreement holder for Pembina Valley Local Immigration Partnership (PVLIP)
- Multi-site, one-stop-shop service model
- Settlement, Employment, Language, Community Connections services in Winkler, Morden and Altona with itinerant & remote service to other regional communities
- 30 year history with established, cross-sectoral partnerships throughout the region

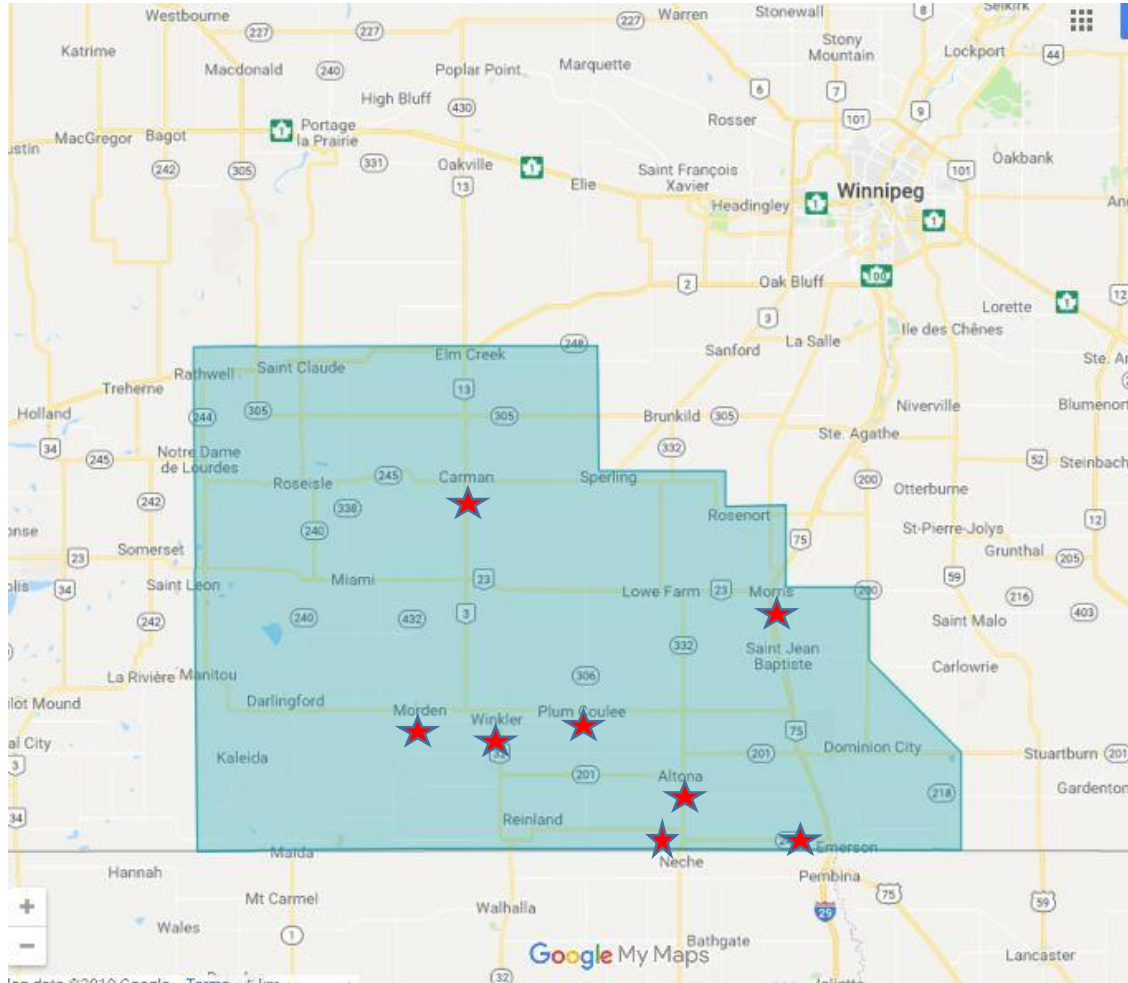


Background – Immigration in The Pembina Valley

- 1880's & 1920's – Mennonite immigration
- 1998 – Manitoba Provincial Nominee Program launch includes Winkler as pilot site (50 families)
- Next 21 years:
 - 15,000 arrivals through Regional Connections
 - 5-18% growth rates in local municipalities
 - 134 countries of origin
 - 35 first languages
- 2017 – Establishment of PVLIP



PVLIP Catchment Area



8 Main Communities
13 Municipalities
9,791 square KM's
60, 656 population



7 of 13 Municipalities Currently Engaged



Regional vs. Local Reeves & Mayors

Regional

- PVRAM (Pembina Valley Reeves and Mayors)
- Includes updates on regional developments
- Platform for implementing regional programs

Local Municipalities

- 13 in total
- 7 currently attend/represented on the Partnership Council
- Balance informed through the Regional meetings of PVRAM



Regional vs. Local LIP Committees

Regional

- PVLIP – Regional Council
- PVLIP – Regional Immigrant Table
- PVLIP – Regional Working Groups
- Meet Quarterly

Local

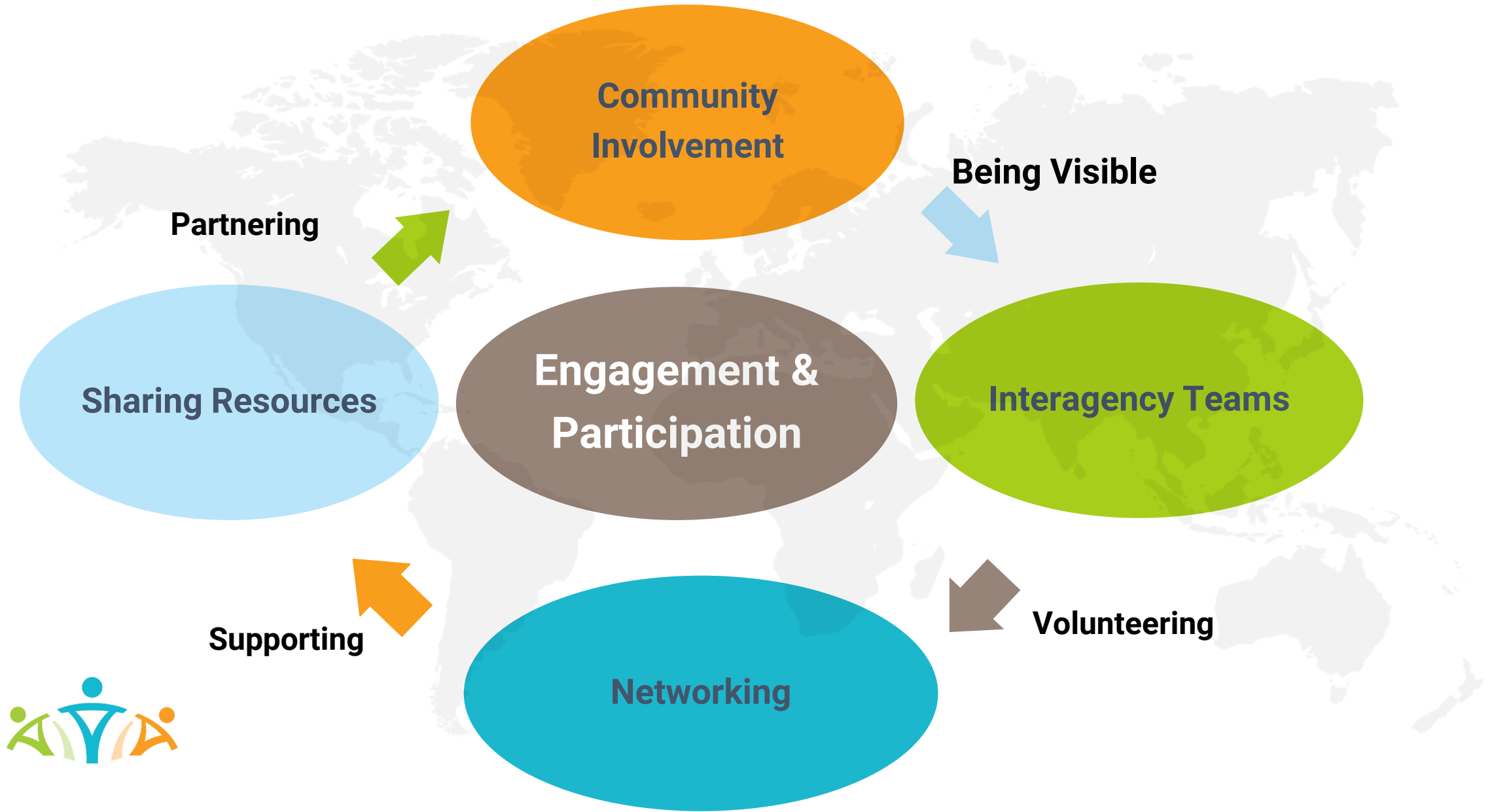
- 2 communities with municipal immigration programs
 - Specific needs/experiences
 - Newcomers
 - Stakeholders
- Local Council
- Local Immigrant Table
- Report to the Regional Committee



Scratch my back, and I'll scratch yours 😊



How do we build engagement?



Engagement/Participation

Community Stakeholders



Local Partnership Council



Pembina Valley Local Immigration Partnership:

Enhancing collaboration, coordination and strategic planning at the community level that will foster more welcoming and inclusive communities while improving settlement and integration outcomes for newcomers in the Pembina Valley.

PVLIP Coordinator:

Elaine Burton Saindon | 204 324 3012 | elaine@pvlip.ca

www.pvlip.ca

Funded by:



Immigration, Refugees
and Citizenship Canada

Financé par :

Immigration, Réfugiés
et Citoyenneté Canada



**Pembina Valley
Local Immigration Partnership**
Connecting Cultures & Community