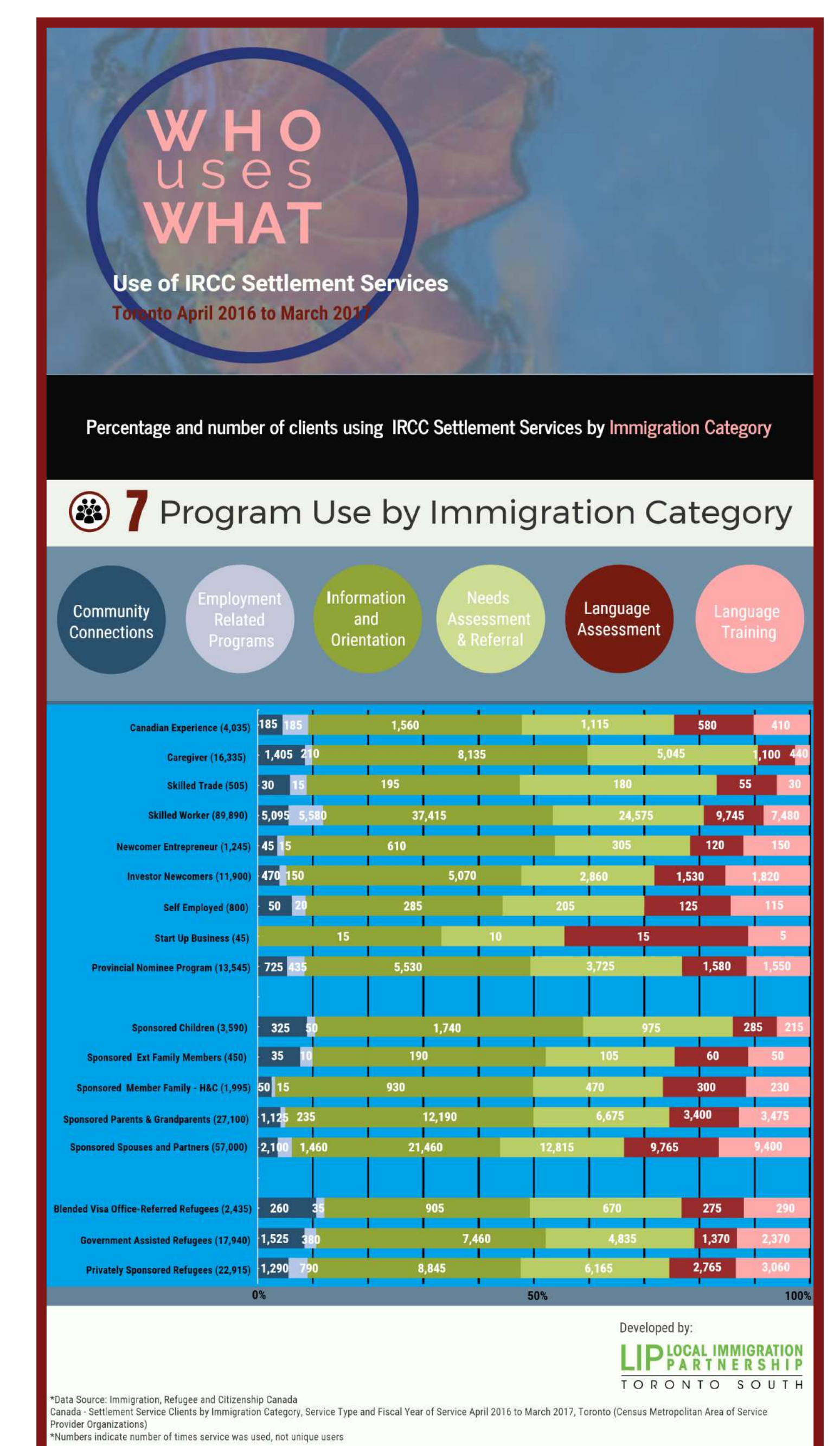
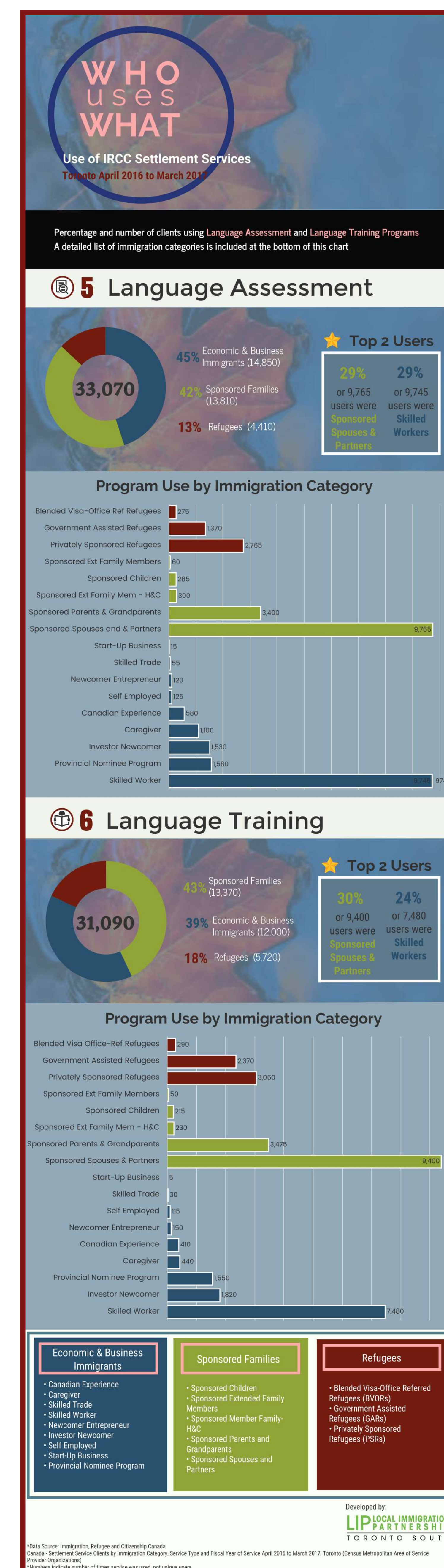
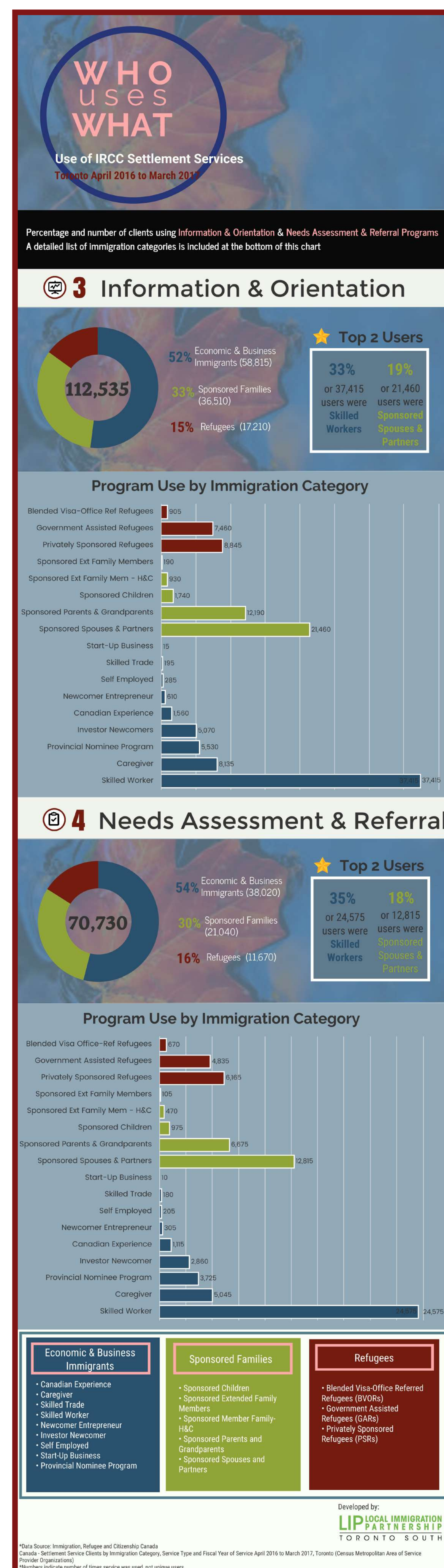
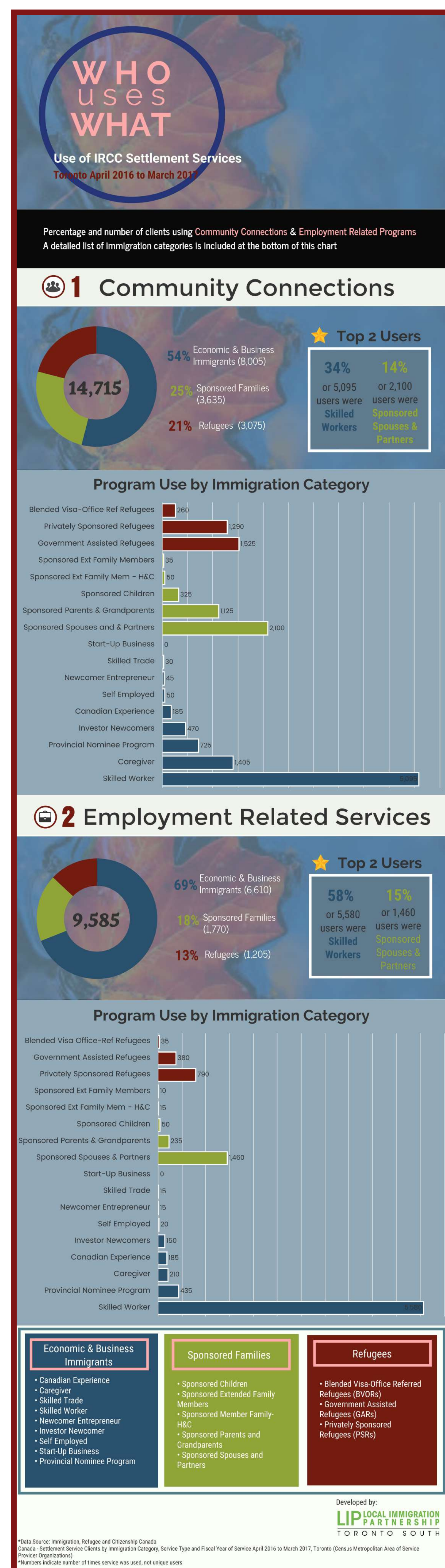
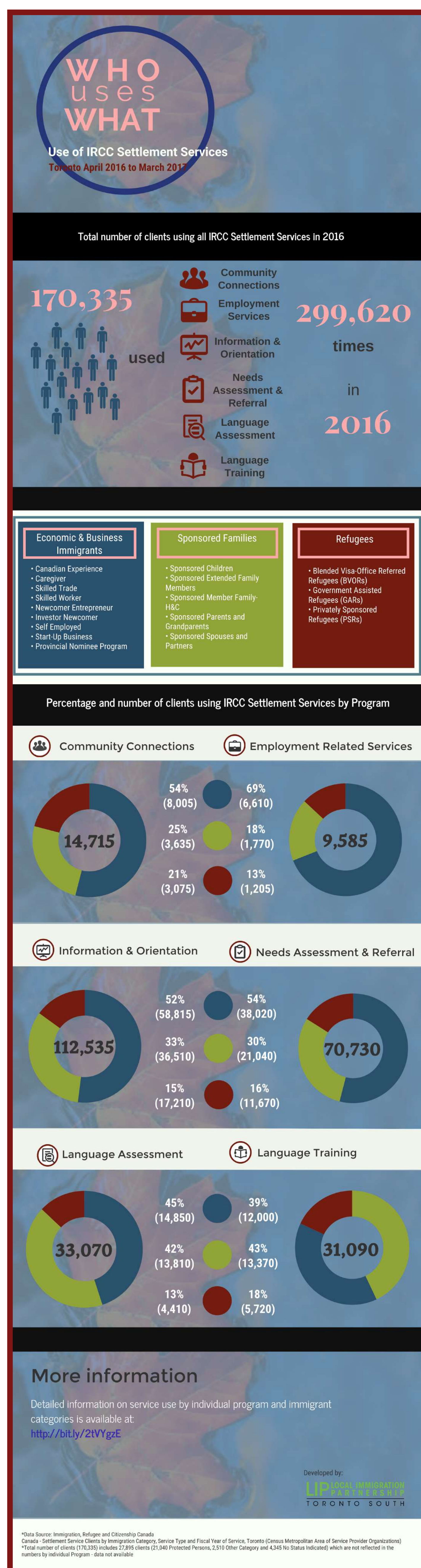


# Use of IRCC Settlement Services

Sandra Guerra and Araf Mohammad, Toronto South Local Immigration Partnership

Set of infographics illustrating the use of IRCC Settlement Services in Toronto from April 2016 to March 2017.

The graphs show use of services both by Immigration Category and by Program.



\*Data Source:  
Immigration, Refugee and Citizenship Canada—Settlement Service Clients by Immigration Category, Service Type and Fiscal Year of Service April 2016 to March 2017, Toronto (Census Metropolitan Area of Service Provider Organizations)