



Statistics
Canada

Statistique
Canada

Canada



Statistics Canada
www.statcan.gc.ca

Census Immigration Data at your fingertips

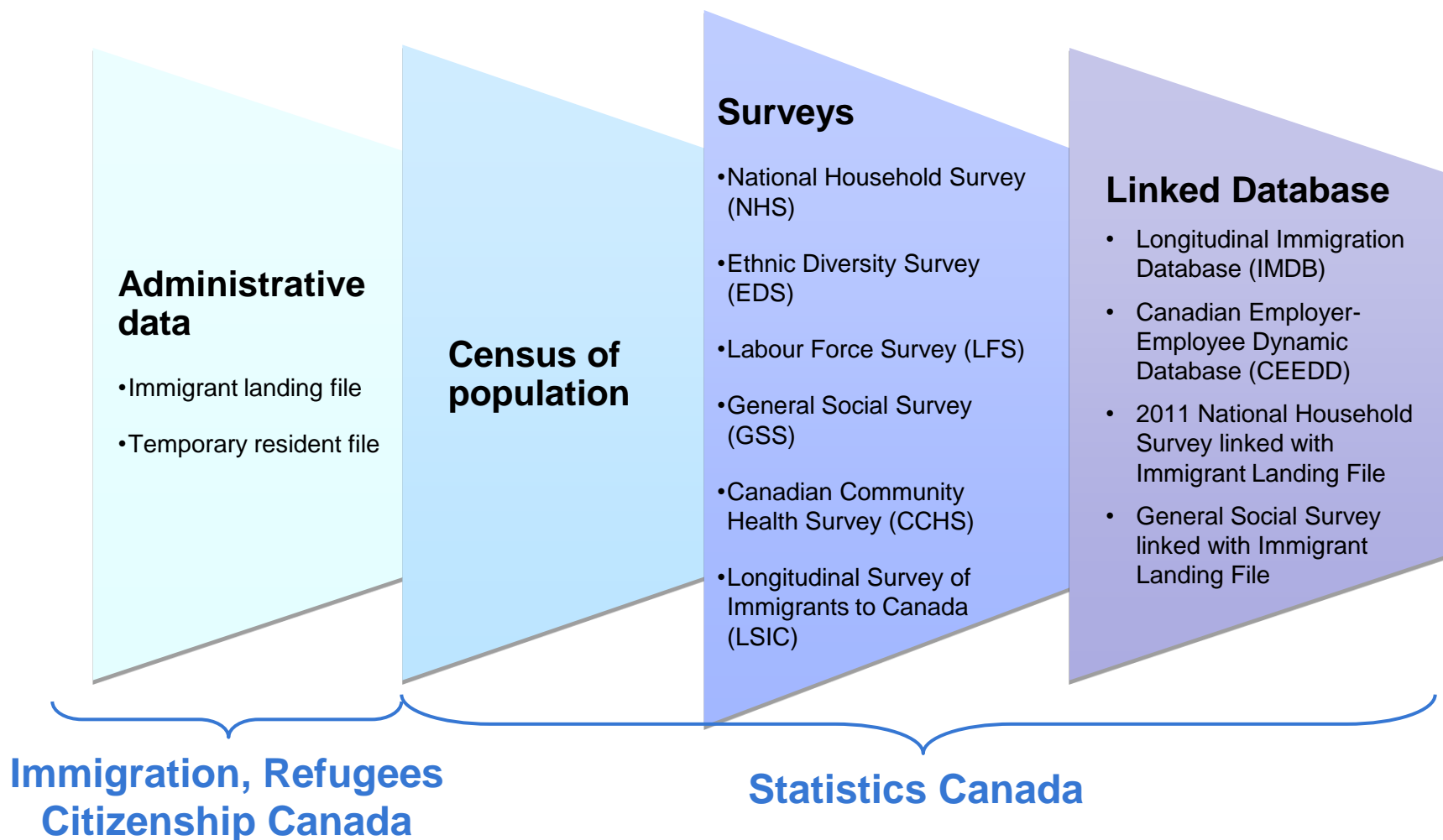
Pathways to Prosperity 2016 National Conference

Ottawa, December 2016

Hélène Maheux

Social and Aboriginal Statistics Division

Major data sources on immigration and ethnocultural diversity



Census Program

- The Census provides a snapshot of the population, taken every 5 years.
- The most recent Census was conducted on May 10, 2016.
- 2011 National Household Survey (NHS) is the most recent data available to study immigration related issues.





Census Program: Immigration and Ethnocultural Content

- **Immigrant status**
 - landed immigrants / permanent residents
 - non-permanent residents
 - year of immigration (can identify recent immigrants)
- **Citizenship**
 - Canadian citizens by birth / by naturalization
 - citizens of other countries
 - dual citizenship
- **Visible minorities**
 - South Asian, Chinese, Black, Filipino, Latin American, Southeast Asian, Arab, West Asian, Korean, Japanese
- **Religious affiliation** (decennial)
- **Place / Country of birth**
 - inside Canada
 - outside Canada
- **Generational status**
 - first generation: immigrants
 - second generation: children of immigrants
 - third generation and beyond
- **Ethnic ancestry / origin**
 - over 200 ethnic or cultural origins
 - single / multiple responses
- **Language**
 - mother tongue
 - home & work language
 - knowledge of official languages and non official languages
 - First official language spoken



www.statcan.gc.ca

Home → Census Program

Information and services

The **2011 Census of Population Program** information holdings include data, analytical, reference and geography products. Videos present highlights and provide an overview of our major releases. Custom services are available for more complex information requests.

Data products



Statistical information including tabulations, profiles, microdata and data visualizations.

Analytical products



An analytical perspective on Census of Population Program topics.

Reference materials



Supporting documentation to assist users with understanding and interpreting Census of Population Program information.

Geography



Geographical information that will assist with interpreting Census of Population Program information.

Video centre



A collection of videos providing insight and highlights from the major releases.

Census consultation



Data users and interested parties across Canada are asked for their views on the type and extent of information they believe should be available from the census.



Home → Census Program → Data products

2011 National Household Survey: Data tables

Selected Demographic, Cultural, Educational, Labour Force and Income Characteristics (730), First Official Language Spoken (4), Age Groups (8D) and Sex (3) for the Population of Canada, Provinces, Territories, Census Metropolitan Areas and Census Agglomerations, 2011 National Household Survey

[About](#) [Data table](#) [Map](#) [Download](#) [Related data](#)

Select data categories for this table

Geography → [Geographic index](#)

Canada

Age groups (8D)

Total population in private households by age group

Sex (3)

Total - Sex

Submit

Canada ¹

i Global non-response rate (GNR) ² = 26.1 %

Selected demographic, cultural, educational, labour force and income characteristics (730)	First official language spoken (4)			
	Total population in private households by first official language spoken ²	English	French	English and French
Total population in private households by age group	32,852,325	24,545,120	7,419,185	347,755
0 to 4 years	1,873,690	1,372,760	403,550	9,915
5 to 9 years	1,803,420	1,402,120	374,180	17,910
10 to 14 years	1,915,685	1,492,930	388,900	30,020
15 to 19 years	2,160,270	1,669,730	452,620	34,060
20 to 24 years	2,163,790	1,683,200	446,000	27,965

Home → Census Program → Data products

NHS Focus on Geography Series



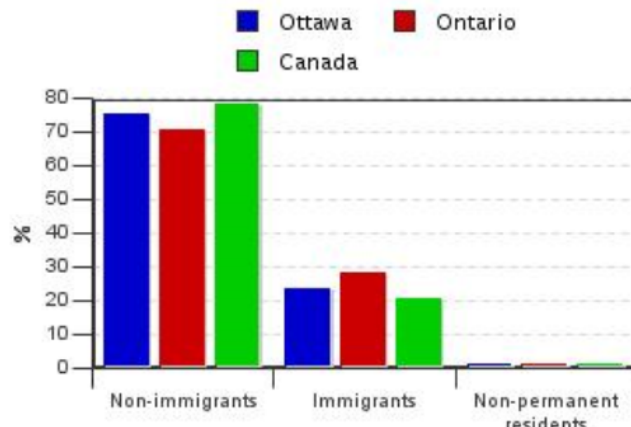
- Aboriginal Peoples
- Immigration and Ethnocultural Diversity**
- Education
- Labour
- Income
- Housing
- Related data

Immigrant population

According to the 2011 National Household Survey (NHS), 202,605 (23.4%) of the population of Ottawa were foreign-born (immigrants), 653,135 (75.3%) were Canadian-born (non-immigrants) and 11,340 (1.3%) were non-permanent residents. ¹ In comparison, the proportion of the population of Ontario who were immigrants was 28.5%, 70.4% were non-immigrants, and 1.1% were non-permanent residents.

Figure 1 Percentage of Canadian born (non-immigrants), foreign born (immigrants) and non permanent residents in Ottawa (City)

▶ Figure description





Home → Census Program → Data products

NHS Profile, Ottawa, CV, Ontario, 2011

NHS data
Census data
Map
Geographic hierarchy
Related data

Select a view: All data

Characteristic	Ottawa, CV Ontario (Census subdivision)		
	Total	Male	Female
Citizenship			
Total population in private households by citizenship ¹	867,090	421,310	445,775
Canadian citizens	814,545	397,310	417,240
Canadian citizens aged under 18	172,245	86,955	85,290
Canadian citizens aged 18 and over	642,300	310,355	331,945
Not Canadian citizens ²	52,545	24,005	28,540
Immigrant status and period of immigration			
Total population in private households by immigrant status and period of immigration ³	867,085	421,315	445,775
Non-immigrants ⁴	653,135	321,055	332,085
Immigrants ⁵	202,605	94,710	107,895
Before 1971	35,145	16,950	18,190
1971 to 1980	23,350	11,295	12,050
1981 to 1990	31,895	15,150	16,745

Data source

2011 National Household Survey

NHS data quality

Ottawa, CV, Ontario
Global non-response rate (GNR) = 21.8%

Download current NHS table

[CSV](#) (approx. 70 kb)

[TAB](#) (approx. 70 kb)

Download NHS data for a complete geographic level

[CSV or TAB](#)

[IVT or XML](#)



Home → Census Program → Census of Population Program Data sets (1991 to 2011)

Filter Datasets

Change survey

1991 Census of Population ▾

Submit

Geography

Census Division

Census Metropolitan Area

Census Metropolitan Area / Census Agglomeration

Census Subdivision

Census Tract

Enumeration Area

Federal Electoral District

Forward Sortation Area

Primary Census Metropolitan Area / Primary Census Agglomeration

Province / Territory

Can't find the dataset that you are looking for? [Contact us.](#)

1991 Census of Population

Showing 1 to 10 of 11 entries

Sort by – table title ▾

Sort

1. ARCHIVED – Profile of Census Divisions and Subdivisions - Part A

Catalogue number: 100701

Release date: September 15, 1992

Formats: [HTML](#) [Beyond 20/20](#)

2. ARCHIVED – Profile of Census Divisions and Subdivisions - Part B

Catalogue number: 100801

Release date: June 1, 1993

Formats: [HTML](#) [Beyond 20/20](#)

3. ARCHIVED – Profile of Census Metropolitan Areas and Census Agglomerations - Part A

Catalogue number: 100702

Release date: September 15, 1992

Formats: [HTML](#) [Beyond 20/20](#)

4. ARCHIVED – Profile of Census Metropolitan Areas and Census Agglomerations - Part B

Catalogue number: 100802

Release date: June 1, 1993

Formats: [HTML](#) [Beyond 20/20](#)

Other Channels of Access

- Data Liberation Initiative (DLI)
 - Public Use Microdata Files (PUMF) : 1971 to 2011 Census, 2011 NHS

- Research Data Centre (RDC)
(<https://crdcn.org/>)
 - Census Microdata File:
1911, 1921, 1931, 1941, 1951, 1971, 1976, 1981, 1986, 1991, 1996,
2001, 2006, 2011 (Census & NHS)

- Custom tabulations
(STATCAN.infostats-infostats.STATCAN@canada.ca)
 - 1971 to 2011 Census, 2011 NHS

Upcoming 2016 Census release

Release date	Release topic
February 8, 2017	<ul style="list-style-type: none">Population and dwelling counts
May 3, 2017	<ul style="list-style-type: none">Age and sexType of dwelling
May 10, 2017	<ul style="list-style-type: none">Census of Agriculture
August 2, 2017	<ul style="list-style-type: none">Families, households and marital statusLanguage
September 13, 2017	<ul style="list-style-type: none">Income
October 25, 2017	<ul style="list-style-type: none">Immigration and ethnocultural diversityHousingAboriginal peoples
November 29, 2017	<ul style="list-style-type: none">EducationLabourJourney to workLanguage of workMobility and migration



Census Program: advantages & limitations

■ Advantages

- more than 100 years of historical data
- detailed information on birthplace, ethnic origins, population groups, languages, etc.
- wide range of socio-economic variables
- large sample size – 20% and 33% of the population is sampled
- data available for small geographic areas

■ Limitations

- not longitudinal data – cannot follow the same respondent over time
- no “at landing” information
- no immigration program information

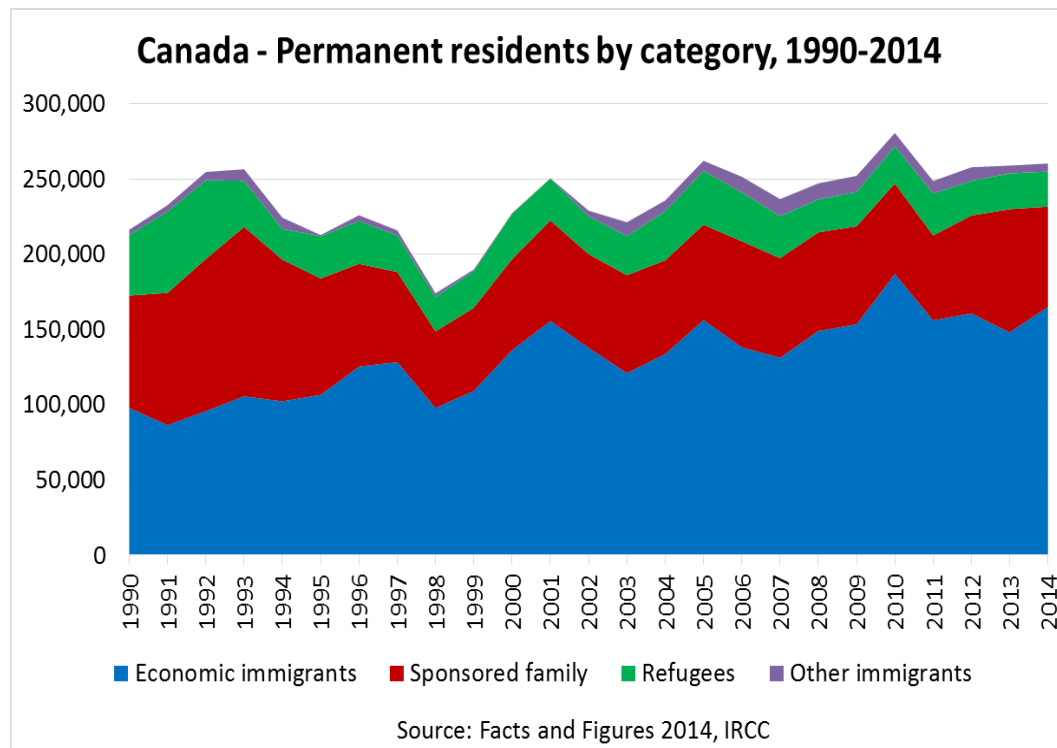


Immigrant admission category

- **Immigrants are admitted into Canada for different reasons**
 - Economic immigrants: Contributing to Canada's economy
 - Skilled workers
 - Canadian experience class
 - Caregivers
 - Business programs (Entrepreneurs, Investors, Self-employed)
 - Provincial nominees
 - Immigrants sponsored by family: Reuniting with family members
 - Refugees: Seeking protection and escaping persecution
 - Protected Persons in Canada
 - Resettled Refugees
- **The conditions under which they immigrate are associated with socio-economic outcomes after admission**

Immigrant Landing File

- Administrative records prepared by Immigration Refugee Citizenship Canada
- It covers all immigrants who landed in Canada from 1980 to present
- Information are collected at the time of immigration, not after immigration.
- Does not account for deaths or out-migration



New content in 2016 Census ?

- **Planning to add 2 new variables to 2016 Census of Population, by linking the IRCC Immigrant Landing File**
 1. Admission category

This variable will refer to the immigration program or group of programs under which an immigrant has been granted for the first time the right to live in Canada permanently by immigration authorities.
 2. Applicant type

This variable will refer to whether an immigrant was identified as the principal applicant, the spouse or the dependant on the application for permanent residence.
- **Objective: Broaden access and simplify dissemination process**
 - Edit and impute inconsistencies and missing values between census responses and linked administrative values.
 - Prepare reference material to explain the new variables and the individual admission categories
 - Determine dissemination strategy in Spring 2017.



Contact information

General enquiries

- 1-800-263-1136 (toll free)
7:30 a.m. to 7:30 p.m. Monday to Friday (Time zones within Canada)
- E-mail: STATCAN.infostats-infostats.STATCAN@canada.ca