



INTEGRATION OF IMMIGRANTS IN SMALLER COMMUNITIES

SCOTT FISHER, CO-CHAIR, NRRC



WHAT IS 'SMALL'/'REMOTE'/'RURAL'?

- City of Greater Sudbury (CMA)=160,274
- City of Thunder Bay (CMA)=121,596
- No other CMA in an area of approximately 800,000 sq kms
- Next largest urban areas are 75,141 (Sault Ste. Marie), 64,043 (North Bay), and 43,165 (Timmins)
- Many FIFO (Fly-in/Fly-out) communities, especially related to mining
 - 'Small' and 'remoteness' can be relative concepts to those who live in the area

Opportunities for Bioheat in Rural and Remote Communities Workshops

REGISTRATION NOW OPEN

Timmins, Ontario Friday, October 21 st , 2016 Days Inn and Conference Centre REGISTER For TIMMINS! bioheattimmins.eventbrite.ca	Cambridge, Ontario Friday, November 4 th , 2016 Cambridge Hotel and Conference Centre REGISTER For CAMBRIDGE! bioheatcambridge.eventbrite.ca
--	---

TOPICS:
Community Energy Planning with Bioheat | Technology Applications & Fuel Types
Funding and Applications for Bioheat in Ontario | Lessons Learned & Best Practices

**For more information please contact Loni Pierce:
Loni.Pierce@ontario.ca or 705-945-5843**

 **Ontario** Ministry of Natural Resources and Forestry

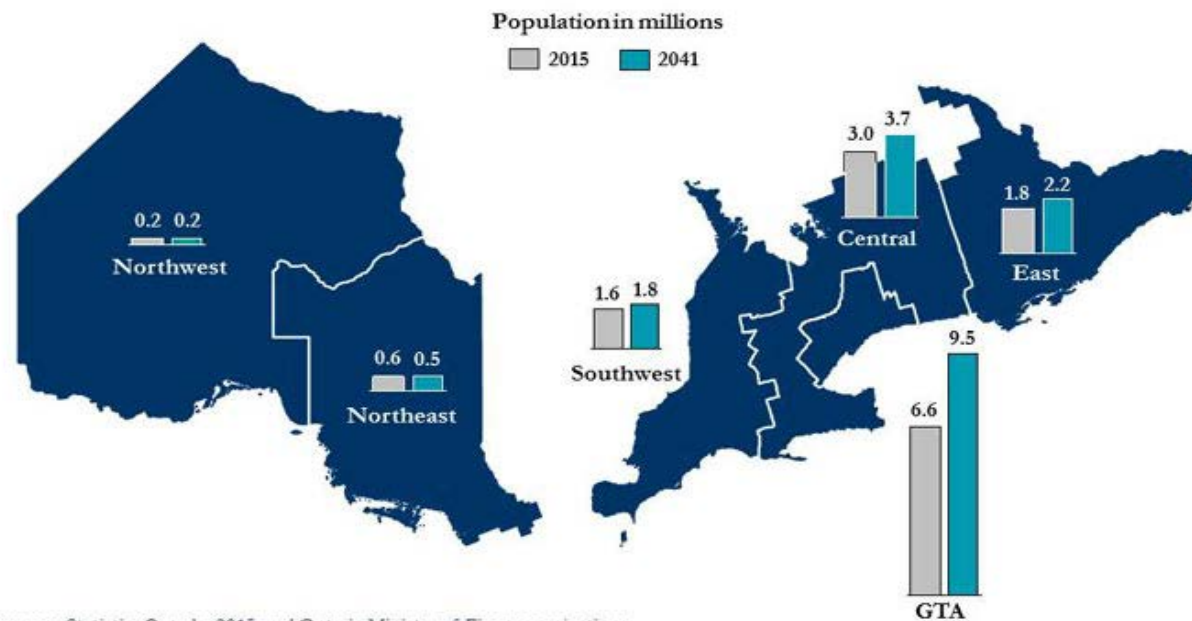
HOW DO WE COMPARE TO THE LARGE URBAN AREAS?

The 'small' centres are getting even smaller in proportion to the larger urban areas

Why care?

Policy decisions; often made with larger urban areas in mind

Chart 8
Population of Ontario regions, 2015 and 2041



Sources: Statistics Canada, 2015, and Ontario Ministry of Finance projections.

POLICY DECISIONS THAT CAN BE IMPRACTICAL

- Centralized government resources
 - Long distances to access services/support
 - Programs administered by organizations with little to no attachment to the area
 - Push to online applications and support



IT INFRASTRUCTURE

Accessing nline systems

- Many areas outside of the 5 main centres have limited/unreliable access

'In October 2014, communications giant Bell Aliant acquired former Crown Corporation Ontera, an Internet provider serving 30,000 customers in Northern Ontario in a territory spanning 200,000 square kilometres. Peter Politis, Mayor of Cochrane, says companies such as Bell Aliant and Nova Scotia-based Eastlink have no reason to offer enhanced service to communities previously served by Ontera'.

'Rural Ontario's still using dial-up speed Internet – here's why' TV Ontario

(<http://tvo.org/article/current-affairs/the-next-ontario/rural-ontarios-still-using-dial-up-speed-internet--heres-why>)

- Older computer equipment/networks; cannot handle newer websites and platforms well



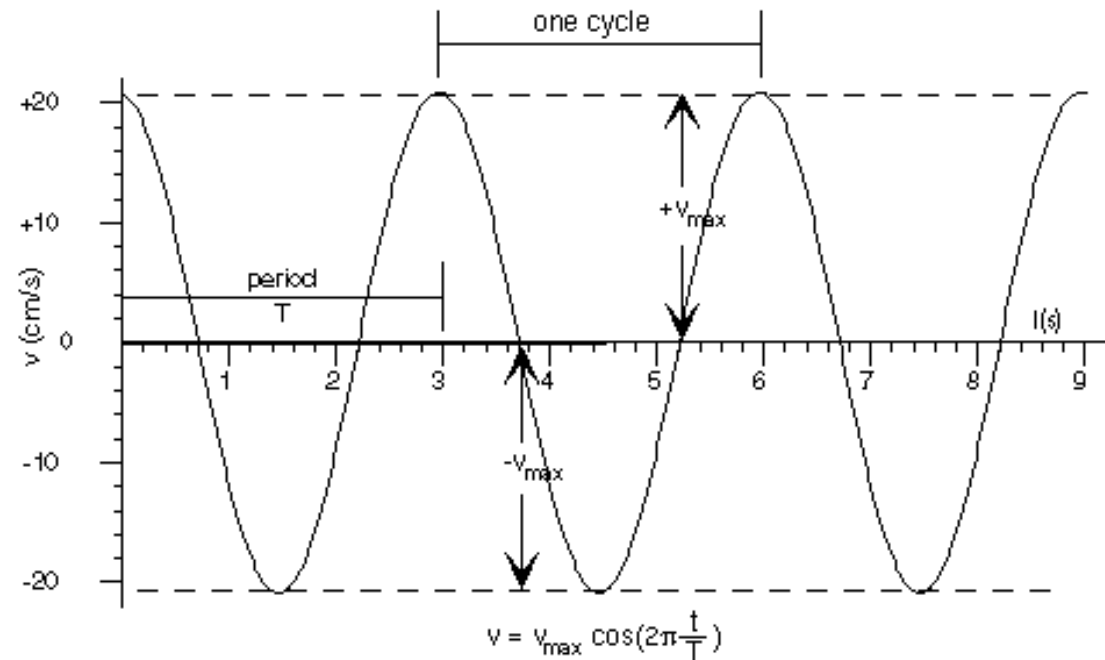
TRANSPORTATION CHALLENGES

- Lack of intercity options (to travel to appointments, etc.)
 - A 45 minute drive by car can turn into a multi-day trip if relying on intercity transit
- Public transportation can cover a large area (municipal boundaries include large unpopulated areas) with sparse service
 - Especially problematic for new immigrants/refugees that rely solely on public transportation
 - Timmins municipal boundary is 2,979 sq. kms.; City of Greater Sudbury is 3,411 sq. kms.



ECONOMIC INTEGRATION

- Cyclical economies
- Long period of depressed industries (ie., Forestry)
- Growth areas in highly skilled areas-lack of critical mass in current workforce (biomedical, academic research, etc.)
- Maybe opportunity for one member but not the other(s); not able to practice their profession
- Lack of opportunities for professional accreditation



BUILDING A COMMUNITY

- Community capacity building is key; need to feel involved and part of the community
 - ‘Connector Program’; build networks with current population
- Host community needs to be sensitized and exposed to the different cultures that have not always been present
 - Anti-oppression/anti-racism committees
 - The 2012 UNESCO Report Fighting Racism and Discrimination: Identifying and Sharing Good Practices in the International Coalition of Cities mentioned DTB's A Community of Acceptance work and recognized the Diversity in Policing



LEADERSHIP FROM MUNICIPAL OFFICIALS (AND OTHERS)

- Mayor/senior Council leaders setting examples
 - E.g., Syrian refugees
 - Essential in changing perceptions and ideas of the established 'tax base'
- Annual international student reception held by the Mayor of the City of Greater Sudbury
- Police Services supporting policies/activities that improve integration
 - Greater Sudbury Police Services (GSPS) 'Intercultural Ride Along Program'
 - <http://gsps.ca/en/specializedservices/inclusionteam.asp>

'Black said since his support of the Syrian refugee committee he received several messages from people who suggested his ideas would get him in trouble politically. Black said he is not worried. He said he ran for mayor to do what he believes is right and to make Timmins a better place to be'.

From *Applause to those who promote racial harmony* in the Timmins Press

(<http://www.timminspress.com/2016/03/31/applause-to-those-who-promote-racial-harmony>)

LEVERAGING POST-SECONDARY INSTITUTIONS

- Research projects/dissertations
 - Opportunities to advance the discourse on inclusion and diversity through student/Faculty contributions
- Resources (funding) to undertake activities that may be a 'hard sell' to the public
 - Guest speakers/seminars/etc. on key issues
- Additional tools/resources that can be brought into northern, rural, remote communities.
- Partnerships to improve access to training/resources



Thank you