



Hamilton Immigration
Partnership Council

SUMMARY IMPACT REPORT 2011 - 2014

WHAT IS THE HIPC?



The Hamilton Immigration Partnership Council (HIPC) brings together leaders from many sectors of the Hamilton community, including the immigrant service provider sector, businesses, unions, community-based organizations, health, local government, media, educational institutions and youth. The purpose of the HIPC is to facilitate the establishment of partnerships within the community to coordinate and enhance the delivery of services to newcomers.

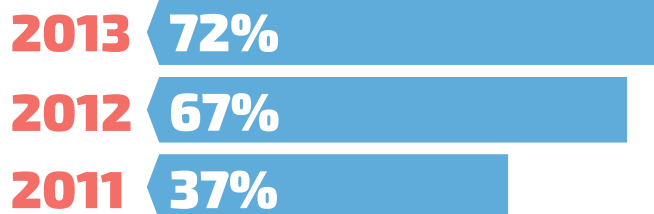
WHAT IS THE HIPC'S VISION?



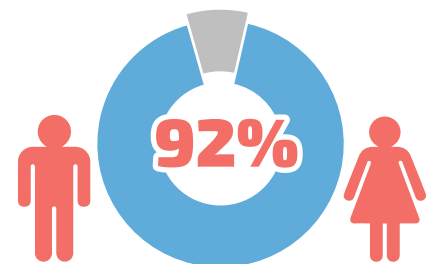
Hamilton is an inclusive community where the talents and experience that immigrants and refugees bring are valued and they are integral to making Hamilton the best place to raise a child.

CREATING A SAFE AND WELCOMING **COMMUNITY**

AWARENESS OF SERVICES



The percentage of service providers who reported they could readily find all of the information needed to confidently refer their newcomer clients has increased each year.



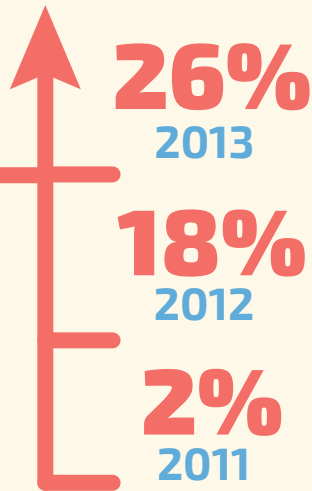
of respondents reported that awareness of services for newcomers has increased because of the HIPC.

BUILDING COLLECTIVE AND COLLABORATIVE **LEADERSHIP**

REFERRALS



Service providers increasingly used more personal referral options, such as phone, email or in person, to contact other service providers.



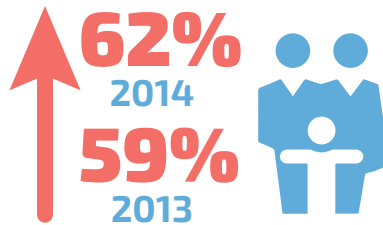
COLLABORATION

62%

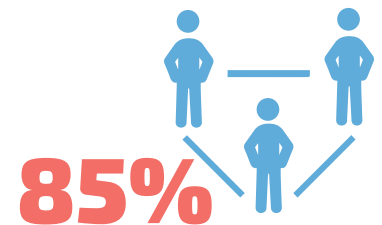


Respondents reported that **since 2011 they have been working more often with other service providers.**

Respondents attributed their increased collaboration to participation in HIPC working groups.



Respondents reported that because of their involvement with the HIPC they collaborated with other organizations to better meet the settlement needs of newcomers.



According to respondents, new collaborative relationships have been formed between stakeholders in the community as a result of the HIPC's work.

COORDINATION

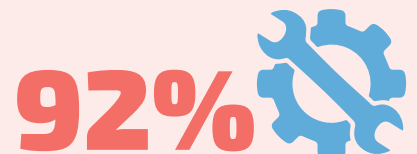
Because of their involvement with the HIPC...



70% of service providers have formed new partnerships.



77% of service providers reported services are better coordinated.



of service providers are involved with the HIPC because of their desire to reduce duplication or gaps in service.

STRENGTHENING THE DELIVERY OF **SETTLEMENT SERVICES**

ENGAGEMENT

80+
VOLUNTEER
MEMBERS

have joined the HIPC
and working groups.



100%

of the HIPC working group members reported
that they are very committed to the HIPC's work.

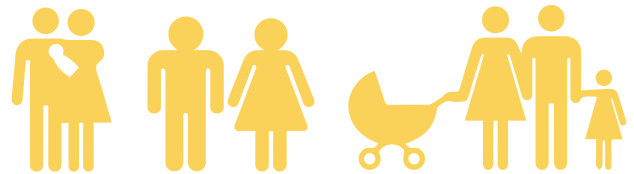
100%

of the Employment Working Group members
reported that monthly meetings foster
collaboration.

CONTRIBUTION

\$4.4
MILLION

of in-kind and
financial contributions from
community partners was
leveraged to carry out the work
of the HIPC in 2013 - 2014.



1065 to 4029

of newcomer clients were supported by
community partners due to their involvement
with the HIPC.

COLLABORATION

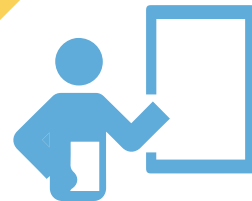
In 2013 59%

of organizations collaborated to
better meet newcomer needs because
of their involvement with the HIPC.



2013

94



frontline staff received training
focused on better serving newcomers.

CREATING AND DISSEMINATING KNOWLEDGE OF **IMMIGRATION**

REFERRALS

54% 2011 **79%** 2013

More service providers consider themselves to be **'Very or Somewhat Knowledgeable'** about how to make referrals to services that support newcomers.



USE OF HIPC RESOURCES

2014 68%
2013 65%

Respondents use resources produced by the HIPC in their work.

2014 71%

of respondents reported that they used HIPC research reports in their work.

LEARNING & INVOLVEMENT IN NEWCOMER ISSUES

59% 2013 **61%** 2014

Respondents became more involved in newcomer issues through community meetings, joining groups, and attending presentations.

35% 2013 **61%** 2014

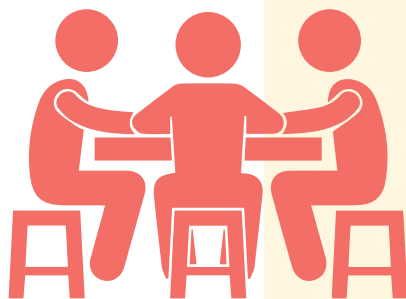
Respondents participated in professional development related to newcomer issues through their involvement with the HIPC.

57% 2014
36% 2013

Respondents learned more about newcomer issues than they previously knew.

INFORMATION EXCHANGE

96% of respondents were motivated to be involved in the HIPC because of the opportunity to share information, resources and ideas.



100% reported that monthly working group meetings provide an opportunity for information exchange.

1289 HIPC resources were distributed in the community.

13354 people visited the Welcome To Hamilton website in 2014.

1500 times HIPC resources have been accessed through the website.



Hamilton Immigration Partnership Council

PARTNERS

- L'ACFO Régionale Hamilton
- Adult Basic Education Association
- Applegrove Co-operative Homes
- Catholic French School Board
- Centre de Santé Communautaire Hamilton/Niagara
- Circle of Friends for Newcomers
- Citizenship and Immigration Canada
- City of Hamilton
- COAST Hamilton
- Collège Boréal
- Employment Hamilton
- Francophone Immigration Network System (Réseau de Soutien à l'Immigration Francophone)
- Global Hamilton
- Good Shepherd
- Goodwill - The Amity Group
- Hamilton Centre for Civic Inclusion
- Hamilton Community Legal Clinic
- Hamilton Health Sciences
- Hamilton Housing Help Centre
- Hamilton Public Library
- Hamilton Urban Core Community Health Centre
- Hamilton-Wentworth Catholic School Board
- Hamilton-Wentworth District School Board
- Immigrant and Refugee Advisory Committee
- Immigrant Women's Centre
- Information Hamilton
- Korlon Strategic Services Inc.
- McMaster University
- McMaster Children's Hospital
- Mohawk College
- Neighbour 2 Neighbour Centre
- Ngen Youth Centre
- North Hamilton Community Health Centre
- OASIS (Community Child Abuse Council)
- Ontario Ministry of Tourism, Culture and Sport
- Refugee Hamilton Centre for Newcomer Health
- Salvation Army Booth Centre
- Service Canada
- Social Planning and Research Council of Hamilton (SPRC)
- St. Charles Adult and Continuing Education
- St. Joseph's Healthcare Hamilton
- Hamilton Spectator
- Volunteer Hamilton
- VPI Inc.
- Wesley Urban Ministries
- Workforce Planning Hamilton
- YMCA of Hamilton/Burlington/Brantford
- YWCA Hamilton

Contact Information:

Cindy Mutch, Project Manager
Hamilton Immigration Partnership Council
City of Hamilton
(905) 546-2424 X 4992

Immigration.partnership@hamilton.ca
hamiltonimmigration.ca | welcometohamilton.ca