



Citizenship and
Immigration Canada

Citoyenneté et
Immigration Canada



Moving forward along CIC's data roadmap

**Presented at : P2P conference
November 24, 2014**

**Lorna Jantzen, Research and Evaluation
Citizenship and Immigration Canada**



Canada



Why develop a data linkage road map?

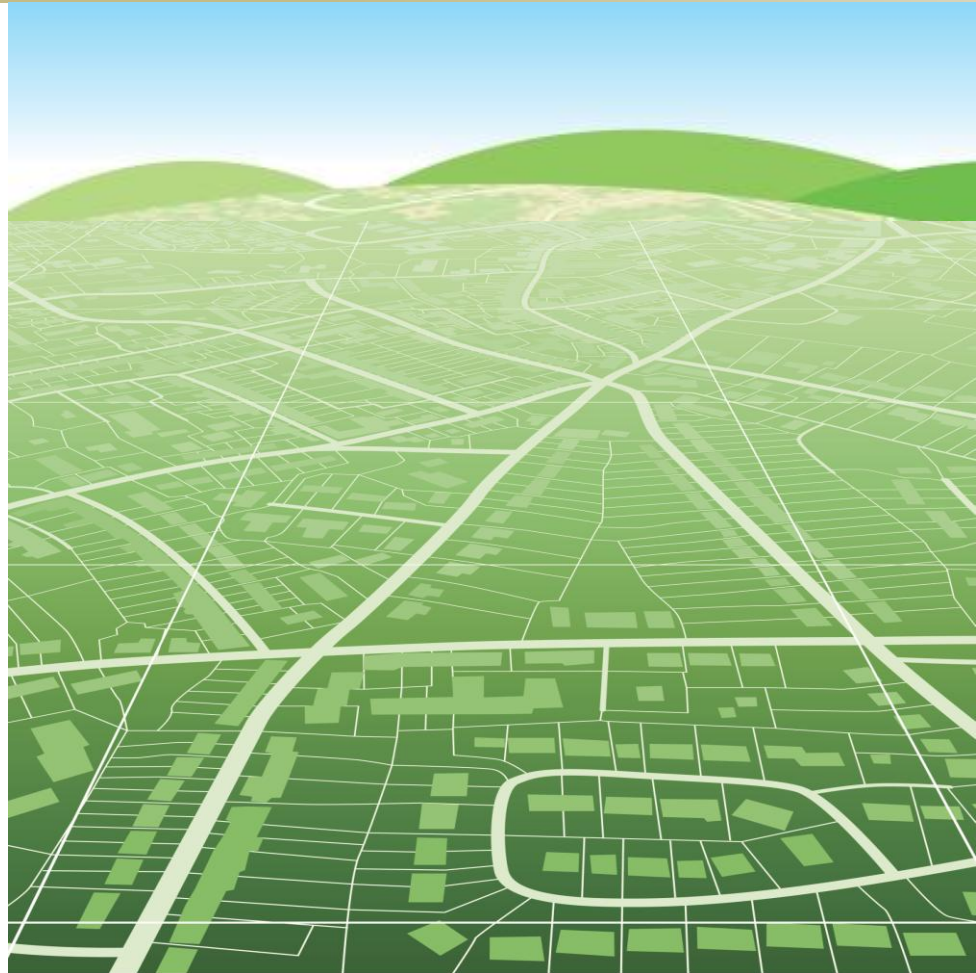
- Completion of the Longitudinal Immigration Data Base (IMDB) re-design (May, 2012) marked a major milestone and increases significantly our analytical capacity
- Citizenship and Immigration, in partnership with STC, developed an integrated evergreen CIC-STC Data Roadmap in the second half of 2012-13 with the objective to:
 - Move toward the development of a complete and integrated Performance Measurement and Research structure;
 - Address specific data gaps (e.g. immigrant's current occupation, immigrant's entrepreneurship, immigrant's settlement);
 - Strategically use CIC administrative data as a basis for effective and cost efficient immigrant oversamples;
 - Improve immigration continuum analytical infrastructure





What is on the CIC's road map?

- ❖ Canadian Employee-Employer Dynamic Database (CEEDD)
- ❖ 2011 National Household Survey (NHS)
- ❖ General Social Survey (GSS)
- ❖ Canadian Community Health Survey (CCHS)
- ❖ Other Health linkages
- ❖ Looking down the road





Canadian Employer-Employee Dynamic Database (CEEDD)

Data Foundation:

- Contains information from business enterprises which allow for analysis at the firm-level, employer-level and employee-level, including: business ownership, job creation and firm size, measures of productivity, measures of capital investment, and measures of revenue and profitability

Paving the way for immigrant research:

- Letter of Agreement was signed to establish a linkage between CEEDD and the Immigration Landing File


Benefits of investment:

- Allows for the identification of immigrant firms, employers and employees by immigration category and other landing socio-demographic characteristics available

Access:

- Requests can be made for at Statistics Canada's Canadian Centre for Data Development and Economic Research (CDER)





2011 National Household Survey-Immigration Landing File (NHS-ILF)

Survey Foundation:

- The NHS provides important baseline information on many population groups in Canada while the ILF collects information on all immigrants at their time of landing in Canada

Paving the way for immigrant

- Policy research pertaining to immigrant integration, multiculturalism and citizenship
- Created a dissemination system to run data tables to support policy research

Benefits of investment:

- With access to this data source, it is now possible to
 - Compare immigrant attributes and outcomes at their time of landing and at the time of the NHS
 - Better understand the outcomes of immigrants relative to other population groups

Access

- Requests can be made to STC for custom data tables to the Social and Aboriginal Statistics Division at Statistics Canada





General Social Survey(GSS)

Survey Foundation:

- Established in 1985, Canada's General Social Survey (GSS) program was designed as a series of independent, annual, cross-sectional surveys, each covering one topic in-depth. The overall objectives are to gather data on social trends in order to monitor changes in the living conditions and well being of Canadians, and to provide information on specific social policy issues

Paving the way for immigrant research

- In 2012-13, CIC and STC completed a GSS Feasibility Study which confirmed the *linkages* between the GSS address list to the Immigration Data Base
- CIC has invested in oversamples for GSS Cycles 27 in 2013 (Social identity) and GSS Cycle 28 in 2014 (Victimization)


Benefits of investment:

- **GSS – Social Identity (2013): Immigrant oversample doubled the number of immigrants respondents:**
Total Survey Size: 27, 700; Total Immigrants : 9,902 (up from 3,452 immigrants in Social Networks in 2008)
- **GSS- Victimization (2014) : In the field until the end of the year**

Access

- GSS on Social Identity will be available in Statistics Canada's Research Data Centres in early 2015
- GSS on Victimization will be available at the end of 2015





Canadian Community Health Survey (CCHS)

Survey Foundation:

- The CCHS is a cross-sectional survey that annually collects information related to health status, health care utilization, health social determinants (e.g. social activity, social support, labour-market participation), other health determinants, and social-demographic characteristics for immigrants and the Canada born.

Paving the way for immigrant research

- CIC is examining the feasibility of a linkage between the CCHS and the Immigration Landing File

Benefits of investment:

- This initial investment will inform our decision on how to proceed with a future linkage

Access

- CCHS micro data is available at STC's Research Data Centres
- Public Use Micro Data are available upon request





Health Linked Data - external to STC

Database foundation:

- **Institute for Clinical Evaluative Sciences (ICES Ontario)** and **Population Data BC** have substantial provincial health data holdings, however information pertaining to immigrants on these files is limited

Paving the way for immigrant research

- Individual Letters of Agreement have been signed with these two provincial organization for CIC to pass extracted Immigration Landings Data so that it can be linked with provincial health records and facilitate research and expand current knowledge of immigrant health services utilization and health outcomes in BC

Benefits of investment:

- As a result of this linkage, substantial new immigrant related health research is being completed.

Access

- These two health organization have the capacity to provide researchers access to provincial-level health data
- These organizations will externally disseminate research findings on their web-sites





Looking down the road

The linkages to CIC's administrative data have improved our ability to analyze immigrants in Canada and move along the data roadmap

Future investments?

- GSS Cycle 30 (2016) on Canadians at Home and at Work
 - Considering oversampling
- CCHS - pending the feasibility study:
 - Bringing over immigrant information (e.g. immigration class) from CIC's administrative databases to the CCHS
 - Examine the CCHS sample to determine whether future immigrant oversamples are required
- Always interested in opportunities to partner with other Federal Departments, provinces, cities or other organizations

