



Social Sciences and Humanities
Research Council of Canada

Conseil de recherches en
sciences humaines du Canada

SSHRC  CRSH

Partnership Funding Opportunities

Pathways to Prosperity 2014 National Conference

November 24, 2014

Éric Bastien

Deputy Director, Partnerships

Research Grants and Partnerships Division



Enabling legislation

The legislative mandate (1977) of the Social Sciences and Humanities Research Council (SSHRC) is:

1. to promote and assist research and scholarship in the social sciences and humanities (SSH),
and
2. advise the Minister (of Industry)



TALENT

Supporting students and postdoctoral fellows to develop next generation researchers and leaders across society

INSIGHT

Supporting excellent research to advance knowledge and build understanding about people, communities and societies

CONNECTION

Supporting the exchange of knowledge to maximize the intellectual, cultural, social and economic impacts of social sciences and humanities research

PARTNERSHIPS - Within the academic community and between academia, industry, government, not-for-profits and communities.

Key Characteristics

Funding Opportunity	Relevant Program
Partnership Grants	Insight, Connection, or a combination of the two _____
Partnership Development Grants	Talent Insight, Connection, or a combination of the two



Key Characteristics

Partnership Grants

- Institution is the applicant
- Duration of 4 to 7 years
- Valued up to \$2.5M
- Minimum 35% cash and in-kind contribution required from other sources (i.e., institution and partners)
- Two-stage application process

Partnership Development Grants

- Project Director is the applicant
- Duration of 1 to 3 years
- Valued between \$75K and \$200K
- No minimum contribution required from other sources
- One-stage application process

Key Characteristics

- Administering organization can be a Canadian university, college or non-profit organization.
- Requires a formal partnership.
- Partnerships may be academic-only or multisectoral.
- At least one post-secondary institution must be involved.

Key Characteristics

Partnership Approaches:

- Disciplinary and interdisciplinary research partnerships
- Cross-sector co-creation of knowledge and understanding
- Networks for research and/or related activities
- Partnered knowledge mobilization
- PG Only: Partnered research centres; Partnered Chairs; Partnered Research Training Initiatives

Key Characteristics

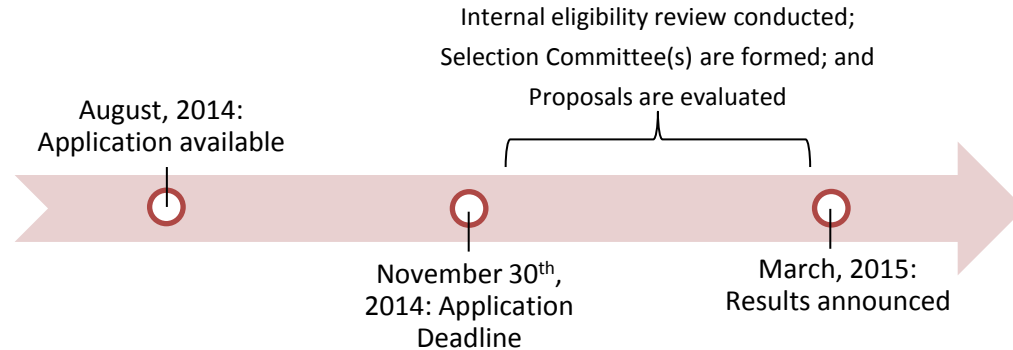
- Multidisciplinary selection committees include expertise from the academic community, and from the public, private and non-profit sectors.
- Evaluation criteria include Challenge, Feasibility, and Capability.
- [Partnership toolkit](#) designed to assist researchers and partners at various stages.

Key Characteristics

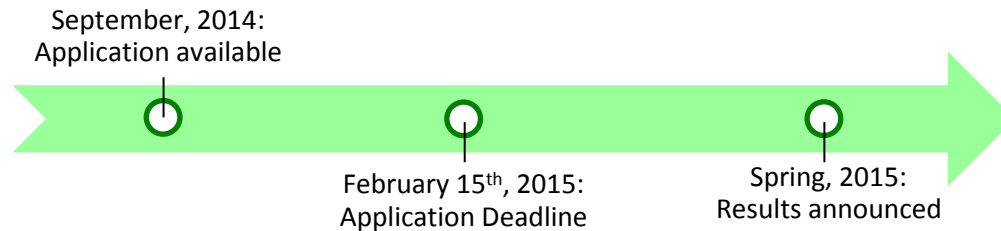
- Some special initiatives that are offered through PG and PDG include the [Kanishka Project](#) and the [Mitacs-Accelerate Internship program](#).
- There are some special initiatives/approaches that are only offered through PG, including [Partnered Research Training Initiatives](#); and CFI's [John R. Evans Leaders Fund](#).

Competition Cycle

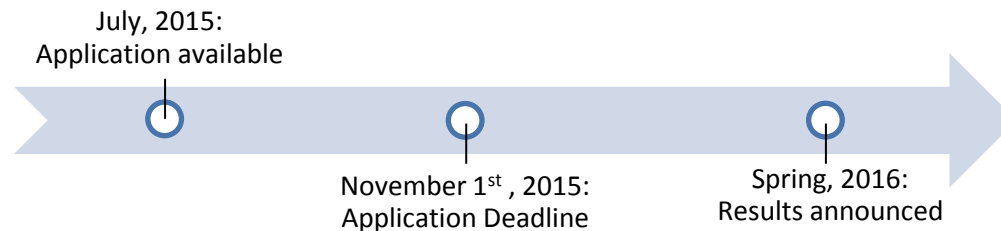
Partnership Development Grants



Partnership Grants (LOI)



Partnership Grants (Formal)



Connection Grants

Value

\$7,000 to \$25,000 for events, and up to \$50,000 for other outreach activities

Duration

1 year

Application deadlines

February 1, May 1, August 1 and November 1

Results announced

At the end of each funding cycle (March, June, September and December)



Other Funding Opportunities

Insight Development Grants

- Grants are valued at between \$7,000 and \$75,000 over one to two years. At least 50 per cent of funds will be reserved for applications from emerging scholars.

Insight Grants

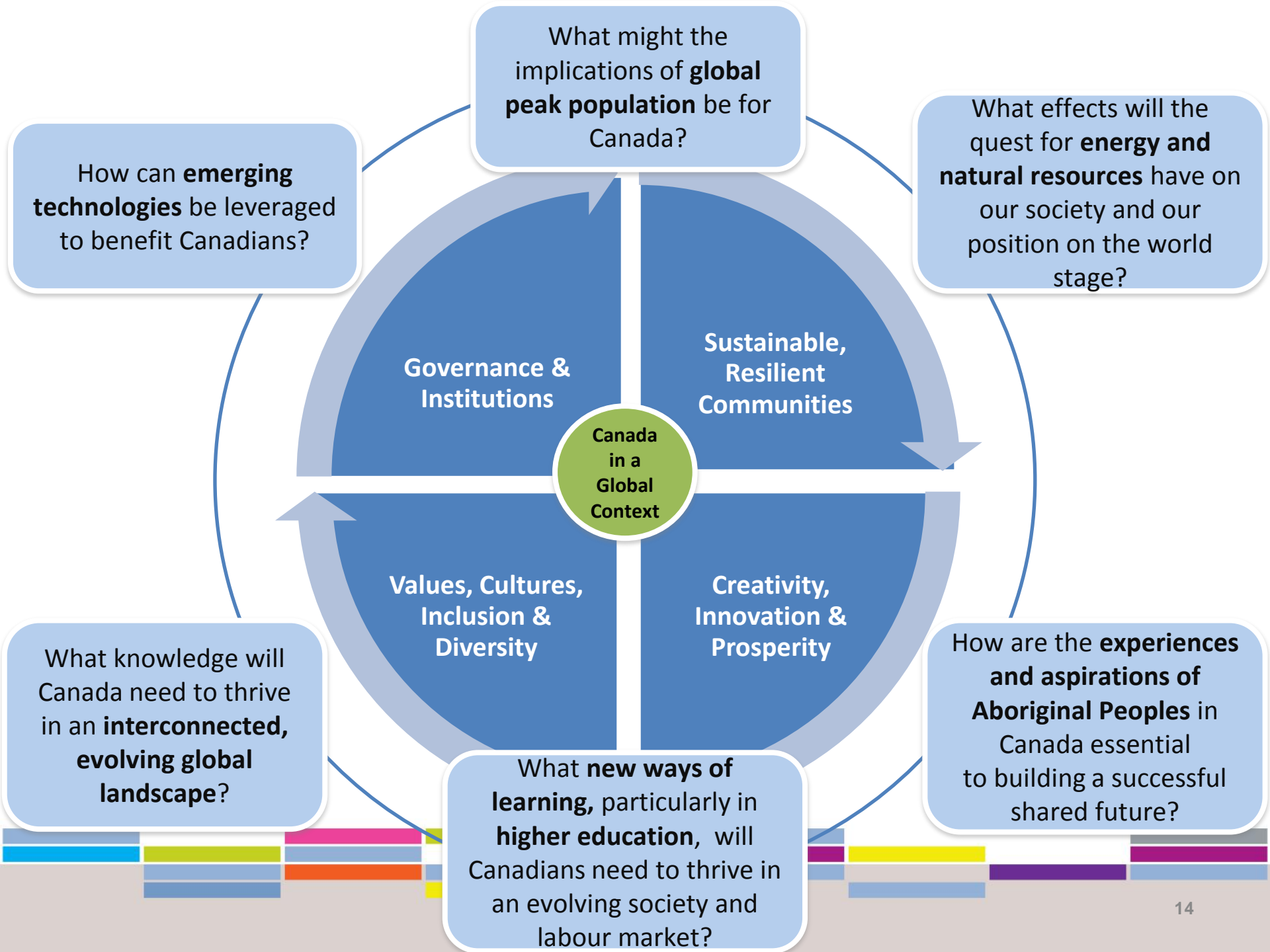
- The maximum value of an Insight Grant is \$500,000 over three to five years.



SSHRC  CRSH

IMAGINING CANADA'S FUTURE





Thank you!

www.sshrc-crsh.gc.ca



Social Sciences and Humanities
Research Council of Canada

Conseil de recherches en
sciences humaines du Canada

Canada