



olip | plio

ottawa local
immigration partnership

partenariat local
pour l'immigration d'ottawa

Progress in Pandemic Context:

The Power of Trust & Cross-sectoral
Collaborations to Protect our Community



Government
of Canada

Gouvernement
du Canada



Progress in a Pandemic Context

Pandemic
Response with
Equity Lens

Leadership &
Alignments

Internal
Capacity
Development

Data Capacity
Development

Economic
Integration

Cultivating
Equitable
Organizations

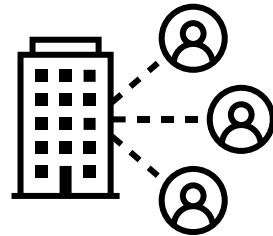
Applying Pandemic Learning to the
Renewal of Priorities (2022-27)

.... and the power of trust and
cross-sectoral collaborations

Introduction to OLIP

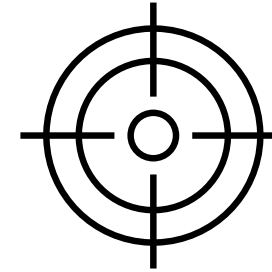


Multi-sectoral partnership of 60 local organizations in 5 sectors, working together across jurisdictions on common vision and shared priorities



Collaborative governance structure & process allows partners to connect regularly, set shared priorities and plan strategic and coordinated actions in the implementation of priority goals

- 9 tables
- 150 individuals
- Executive Committee
- Secretariat



Targeted Results:

1. **Economic Integration**
2. **Seamless continuum of relevant and accessible service**
3. **Inclusive & equitable Organizations**
4. **Community connections:** mechanisms to strengthen contact and relationships between organizations & immigrants & bridging connections and civic reliance between residents across diversity.

Pandemic Response Platform with Equity Lens

Early consciousness of the high risk of exposure facing immigrants

Pandemic Response Platform, Using Equity Lens

Pandemic Response Platform

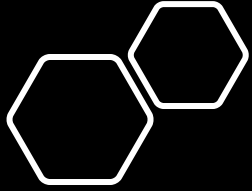
- 11 areas of need identified / addressed collaboratively

Targeted Protection

- Education, wrap-around services, testing, voluntary isolation, targeted vaccination

Grounded Knowledge

- Dialogue, COVID Stories, Research Commissioned, DSD COVID Data, KM, intervention evaluation



**GROUNDING
KNOWLEDGE**

**COVID EQUITY
DATA FOR ACTION**

Population Experiences

- COVID Community Dialogue
- True, Fictionalized COVID Stories
- Disaggregated Socio-demographic COVID Data

Organizations' Experiences

- Analysis of organizations' capacities & approaches to dis-aggregated administrative data collection
- COVID Intervention Evaluations

Community Experiences

- Low-income neighborhoods
- Mobilizing partners' tacit knowledge
- Drawing from bodies of knowledge to build frameworks & aligning to strategy

Selected Impacts of KM & COVID Equity Data Initiatives

Targeted population protection Approaches to COVID Protection

Prioritization of vaccination in disproportionately impacted neighborhoods

Special income supports for undocumented refugees

Newcomer-focused vaccination clinics

EQUITY OTTAWA

Phase IV: Supporting Partners' Actions to Build Inclusive & Equitable Organizations, through peer support, community input, and knowledge mobilization, and collaborative progress monitoring

Community of Practice

- Curation of a safe space for reflection & shared learning
- Peer support
- Community engagement

Expertise & Knowledge Events

- Expertise at learning events
- Good practices development in selected domains

Action Support Tools/Resources

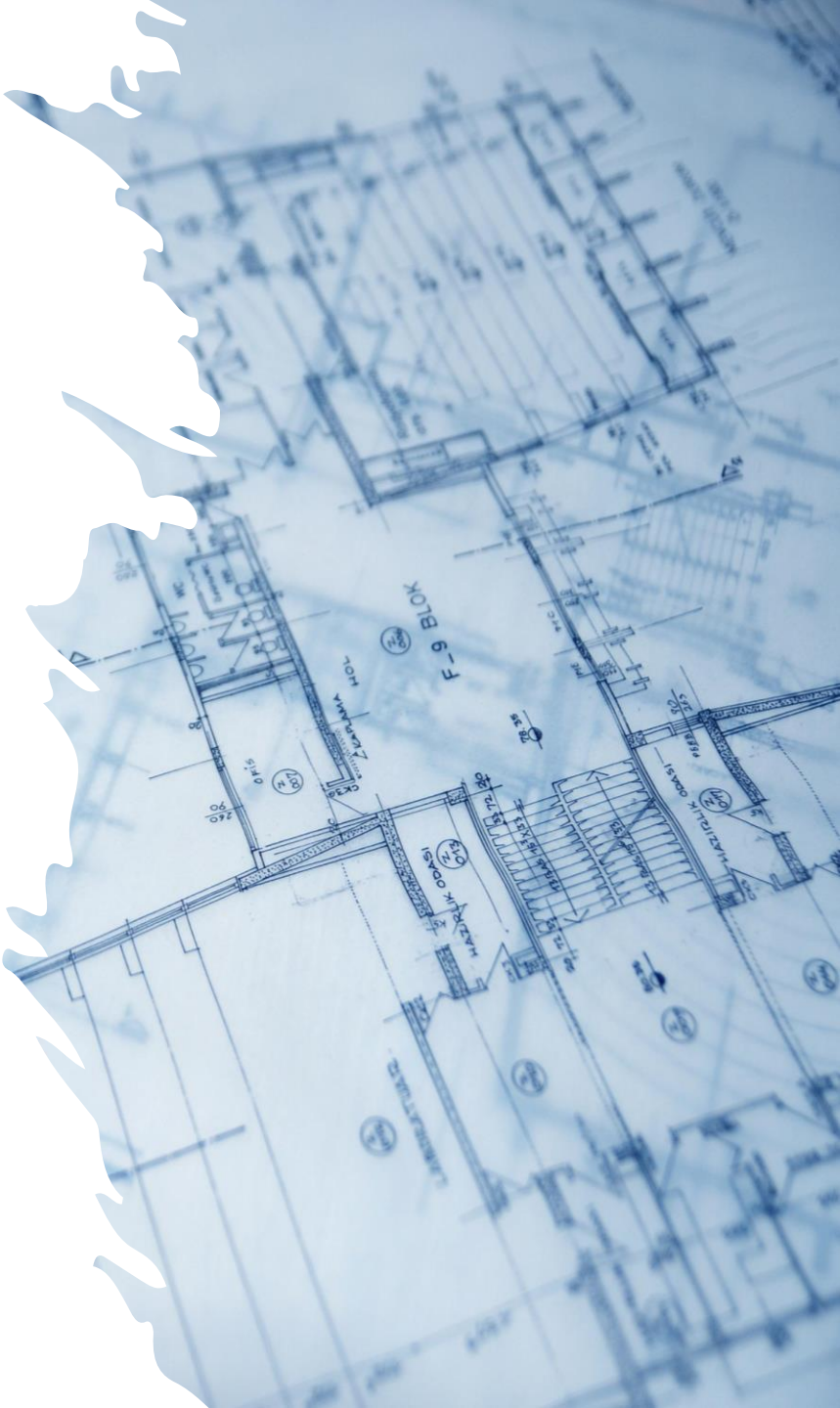
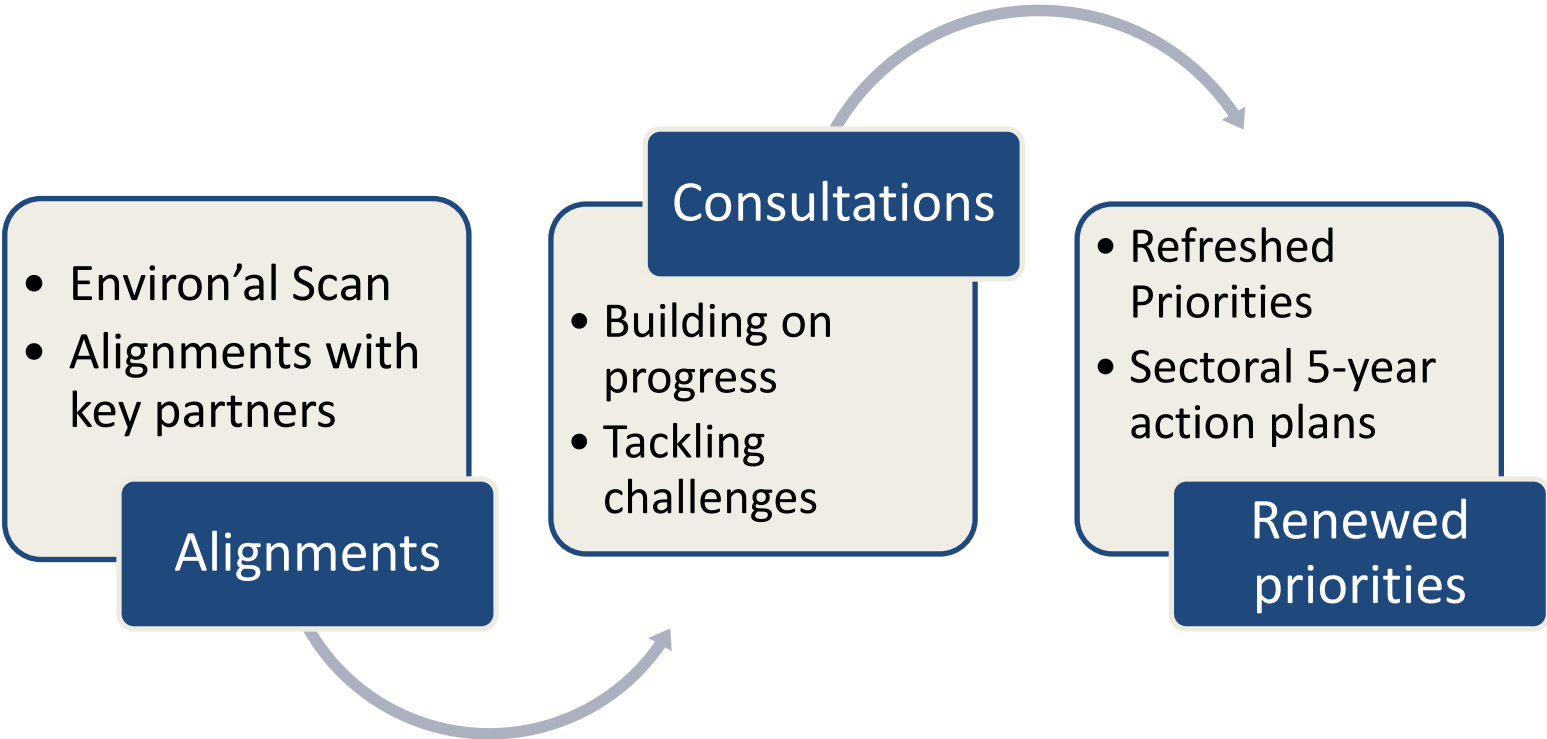
- Custom tools to fit partners' needs
- Content and communications
- Collaborative progress monitoring

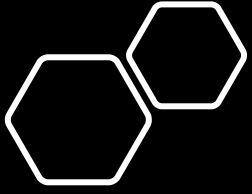
Supporting Capacities: Funding, Leadership, & Alignments

- Shift to Grant Funding
- OCF & City of Ottawa Pandemic response funding
- New federal grant to support a 4th Phase of Equity Ottawa Partnership
- Significant & extensive leadership & alignments



Strategy Renewal (2023-27)





Thank you!



olip | plio

ottawa local immigration partnership | partenariat local pour l'immigration d'ottawa

Questions welcome

Email: info@olip-plio.ca
Website: www.olip-plio.ca